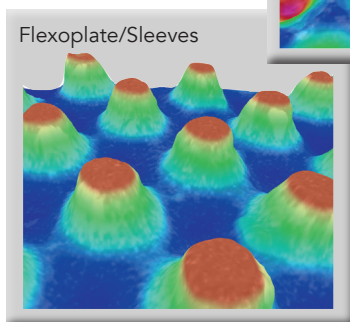
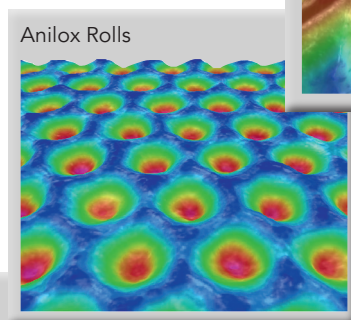
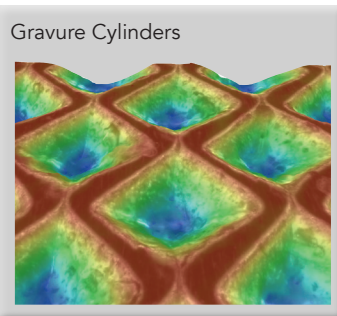


Introducing the NEW AniCAM HD™ *Plus*



Troika Systems Limited, manufacturers of the AniCAM HD™ *Plus*, SurfaceCAM HD™ and MagneCAM HD™. The leading 2D and 3D Digital Inspection Microscopes for the Printing Industry for Anilox, Gravure and Flexoplate Management and Control.

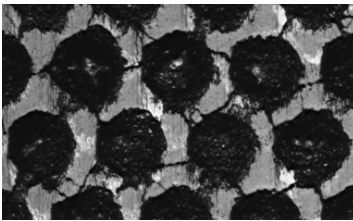
If you can't measure it, you can't control it.

Anilox QC

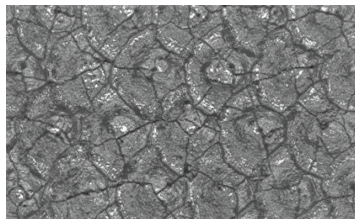
AniCAM HD *Plus* with Anilox QC & AMS for Continuous Measurement and Control of Your Anilox Inventory.

Knowing the condition of your anilox for a printer/converter has been proven to save considerable press setup time, reducing make ready waste and landfill disposal costs.

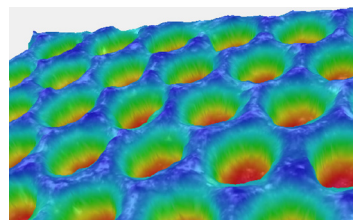
Anilox QC automatically measures the volume, depth, screen count, cell wall & opening, angles and consistency of volume across the roll width, against a proven standard (ACP).



Surface Wear



Ceramic Damage



3D Imaging & Cleaning

Cell Information					
Volume	10.4	cm ³ /m ²	Wall	6.0	um
Depth	31	um	Opening	63.4	um
Screen	450	lpi	Angle	60	deg

Reporting

Anilox QC Options

Complex Cell – An optional software module for volume and geometric measurement of non-hexagonal cells allows you to measure any type of engraving (i.e. tri-helical, stretched hex, QUAD and GTT).

X-Axis Micro Adjustment – This option has been developed to allow users to move the analysis head of the camera laterally up to 10mm (+/-5mm) to assist in finding certain measuring positions.

Anilox Management System (AMS) – Record, Track, Print and Store your inventory details using the Anilox Management System, showing suitability, wear rates and cleaning scheduling, enabling you to plan for future expenditure to replace or refurbish anilox rolls.

MagneCAM HD – Positioning an AniCAM HD Plus on steel cored cylinders/rolls rotated at any angle, incorporating magnetic legs and special internal drive system to allow measurement on press, where access or removal of cylinders or rolls is difficult.

Anilox Cell Analysis

Report by:	Jon Jordan	Customer:	Troika Systems
Roll ID:	sample roll		
Job Date:	01/12/2015, 19:24		

Roll Condition and Specification

Cell Opening:	24.7 um	Screen Angle:	60 degrees
Cell Wall:	1.8 um	Screen Count:	950 lpi

Volume Information

	1	2	3	
Volume	4.0	3.3	3.7	3.7 cm ³ /m ²
Depth	12	10	11	11 um

Calibrated to: Standard [C7/8.0.R8.E240/24,x20/3]

Comments:
sample of process roll showing variation across roll width

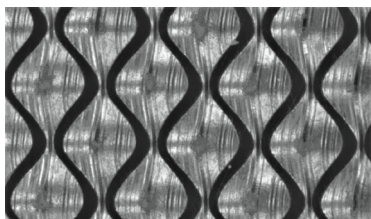
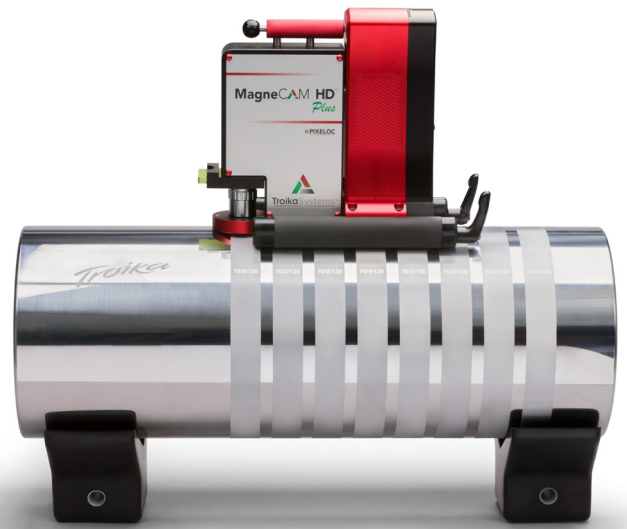
Signature

Gravure QC

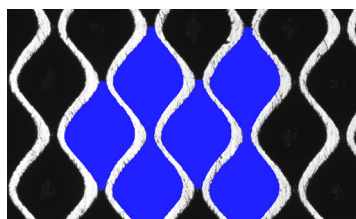
AniCAM HD *Plus* with Gravure QC & CMS for Continuous Measurement and Control of Your Cylinder Inventory.

Knowing the condition of your cylinders for a printer/converter has been proven to save considerable press set up time, reducing make ready waste and landfill disposal costs.

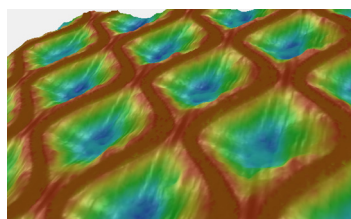
Gravure QC automatically measures the volume, depth, cell wall, height, width & channel, consistency of volume and depth across the cylinder width against a proven standard (ACP).



Condition



Auto Analysis



3D Imaging & Cleaning

Cell Information					
Depth	51	um	Stylus Angle	135.0	deg
Volume	13.2	ml/m ²	Opening	247	um
Screen	37	lpcm	Height	380	um
Angle	48	deg	Wall	28	um
			Channel	24	um

Reporting

Gravure QC Options

X/Y Axis Micro-adjuster – was developed to allow users to move the AniCAM HD Plus laterally up to 10mm (+/- 5mm) along the X-axis and across the Y-axis to assist in finding specific engravings.

Stylus Analysis – a simple stylus mount and software to check the angle and condition of the stylus. The software allows the visual representation of the stylus for condition and to measure the angle to +/- 0.1 degree.

Cylinder Management System (CMS) – Record, Track, Print and Store your inventory details using the Cylinder Management System, showing suitability, wear rates and cleaning scheduling, enabling you to plan for future expenditure to replace or refurbish the cylinders.

Auto 2D Analysis – Analysis of multiple size cells for automated, accurate measurements of engravings within 1 second.

Chemical/Laser Engraving – For chemical and laser etched engravings and KBA Black security printing plates.

Gravure Cell Analysis

Report By: jj	Customer: troika
Cylinder ID: R&R test	
Job Date: 13/02/2015, 07:55	

Cylinder Condition and Specification

Depth:	41 um	Stylus Angle:	130.0
Cell Volume:	13.4 ml/m²	Cell Opening x Height:	158 x 176 um
Screen Count:	63 lpcm	Cell Wall:	11 um
Screen Angle:	37 degrees	Channel:	16

Volume Information

Cell Volume:	13.4	13.4	13.3	13.3	13.2	13.4 ml/m²
Depth:	41	41	41	41	40	41 um

[C0]0.0.R-1,E190/16.x10[5]

Comments:
Gage R&R test to show anicam tolerance

Signature

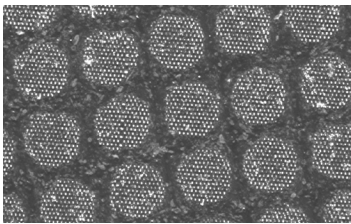
Troika AniCAM HD *Plus* Gravure QC Report Sheet

Flexoplate QC

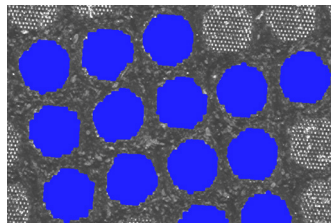
AniCAM HD *Plus* with Flexoplate QC gives optimum control of your Flexoplates and Sleeves.

Providing both 2D and 3D analysis of all plate types. Taking only seconds to read, the software generates dot percentage, diameter, screen, relief depth, angles and dot gain compression simulations.

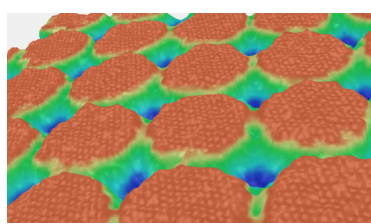
It can be used on sleeves and flat plates, an easy to use tool that will confirm the condition of your plates, ensuring good quality dot profiles.



Condition



Auto Dot Analysis



3D and Dot Profile

Dot Information			
% Dot	52.0	Height	59 um
Screen	57 lpcm	Diameter	145 um
Angle	13 deg	Spacing	176 um
Left Angle	62 deg	1	7 um
		2	53 um

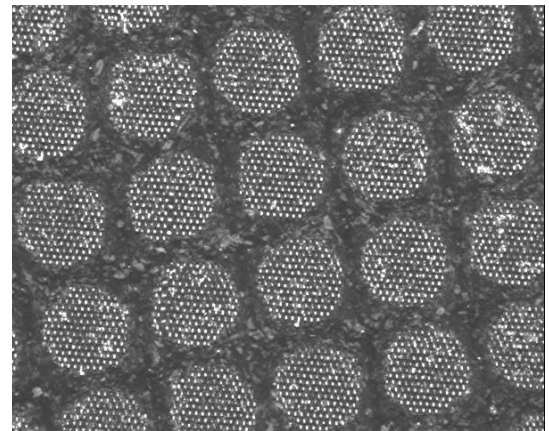
Reporting

Flexoplate QC Options

X/Y Axis Micro-adjuster – was developed to allow users to move the AniCAM HD Plus laterally up to 10mm (+/- 5mm) along the X-axis and across the Y-axis to assist in finding specific areas for analysis.

LED Backlighter – The Backlighter was specially developed with an LED-based system of transmissive collimated light for optimised analysis of flexo-dot surfaces.

Flexoplate Analysis



[C8/14.0,R15,E240/64.x4/1]

Authorised Troika Dealer:

Customer: Troika Systems
 Plate Info: 1234
 Operator: Jon Jordan
 Date: 30/06/2016, 14:14

Percent Dot: 52.0 Height: 59 um
 Screen Count: 57 lpcm Diameter: 145 um
 Screen Angle: 13 degrees Spacing: 176 um

Left Angle: 62 deg 1: 7 um
 Right Angle: 52 deg 2: 53 um

WWW.TROIKA-SYSTEMS.COM



www.troika-systems.com
 Tel: +44 (0) 1793 766355
sales@troika-systems.com



Contact

Troika AniCAM HD *Plus* Flexoplate Report