

ColorTrack

A modular software that suits your needs. Digitize and evaluate your work with QualityTrack, reduce start-up times with InkCorrection!

ColorTrack has two main modules, **QualityTrack** and **InkCorrection**. **ColorAnalytics** works in conjunction with these two modules to provide data analysis and reporting capabilities.

ColorTrack QualityTrack allows you to organize the jobs by digitizing the targets and tolerances, and monitoring the production, saving all the measurements taken for a specific order or roll produced.

ColorTrack InkCorrection completes the management of the entire print color workflow by integrating with the formulation software database and enabling the correction of inks directly at the press side. Furthermore, it allows absolute repeatability of the colors across every shift and every plant responsible for the single production.

ColorAnalytics Basic, which is included in the QualityTrack module, allows you to evaluate print quality trends and export live production data at any time. The optional ColorTrack Analytics PRO version allows you to analyze one or more jobs simultaneously and in detail, verifying all the information collected in production, such as: measurements, tolerances, notes, roll number, batch number, etc.

Strenghts



Discover benefits of ColorTrack

Improves **the organization** of job data

Reduces start-up times

Digitizes references and tolerances

Shares **data** between different plants

Improves job **traceability**

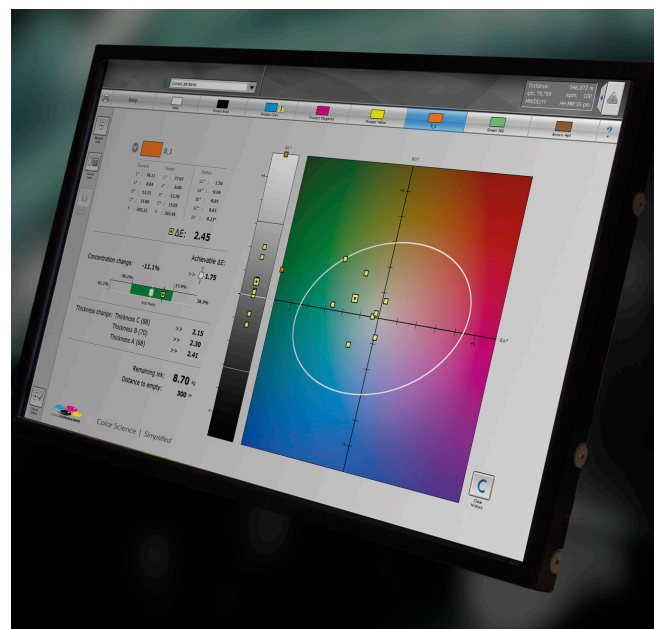
Allows the **analysis** of data and the creation of **reports**

Harmonizes color standards

Analyzes events in production to help **identify the causes** of color variations

Allows a statistical **evaluation of the productions**

Calculates ink consumption



A tailor-made software

QualityTrack

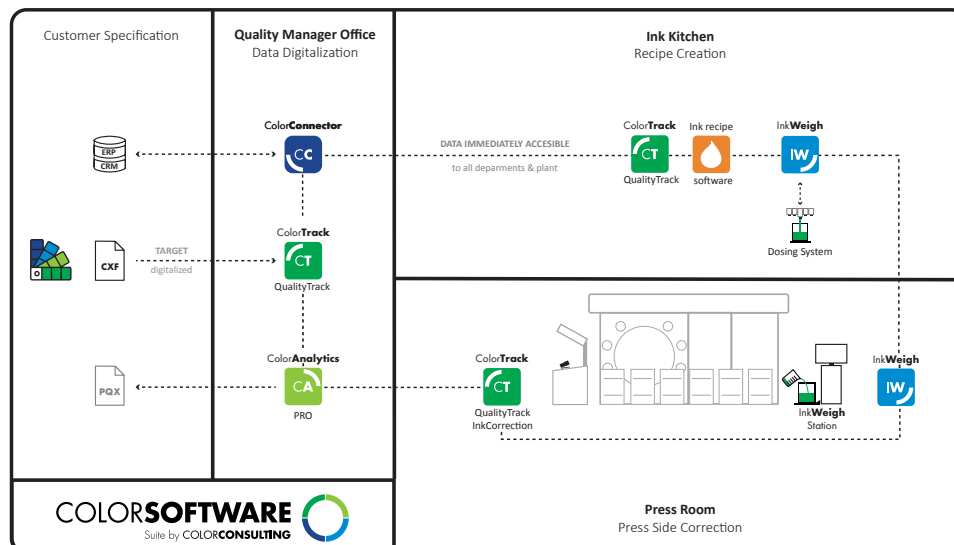
- **It improves the organization** of the departments **thanks to the digitization** of all references and tolerances, for each job and customer, in order to ensure repeatability and exclude any ambiguity in customer requests.
- **It allows the sharing and control of data** even in different production plants.
- **It improves job traceability** by creating a link between the measurements performed during the print run and the substrate used (batch, roll or sheet number).
- It guarantees the saving of all measurements during the production phase and, with the help of the ColorTrack Analytics Basic software, allows data analysis and the **implementation of a continuous improvement process**.
- It allows the verification, even after some time, of the work carried out and the **creation of reports**, thanks to the export function, which allows you to demonstrate the quality achieved in the event of disputes.
- **It harmonizes the color libraries**, optimizing them for a less expensive work.

InkCorrection

- **It drastically reduces start-up times and waste** of paper and ink for an unbeatable return on investment.
- **It calculates ink consumption** and, if used together with the ColorTrack PressConnection encoder board, automatically alerts the operator when the press is low on ink.
- **It decreases the number of ink corrections**.

Analytics PRO

- **It analyzes all the events** that occurred during the start-up and production phases; the amount of ink eventually added, the notes, the duration of the different production phases, etc.
- It highlights the correlation between colorimetric trends and events to help **identify the cause of color variations**.
- It provides a complete picture of the work's progress, showing the maximum and also the average number of corrections.
- **It records and organizes the measurements** for an effective statistical evaluation of the production runs.

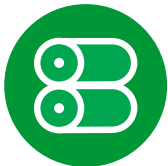


Functionality



Job set-up:

QualityTrack allows you to define the color target by: measurement, CxF, Pantone® Digital Color Libraries, PantoneLIVE* and importing from a previously created job or directly from the recipe database of the formulation software. It is also possible to set tolerances such as ΔE , Δh , Δ density, TVI / SCTV for each color and select the recipe according to the usage. When installed together with InkFormulation, QualityTrack allows you to calculate the ink needed for production. Optimize your workflow thanks to automatic saving that makes information immediately available to all departments.



Quality control during the production:

QualityTrack allows you to enter the job code and open it simply by typing the code. It also allows you to immediately measure the printed samples, even in random order, thanks to the SMART color recognition function, and to enter the roll or sheet code for each measurement performed. It is possible to view the differences between the target and the printed samples in terms of ΔE and concentration difference both in numerical form and graphically by choosing from the following graphs:

- CIELab chart,
- Spectral curve,
- TVI (tonal value increase),
- SCTV (ISO 20654:2017 - Measurement and calculation of Spot Colour Tone Value)

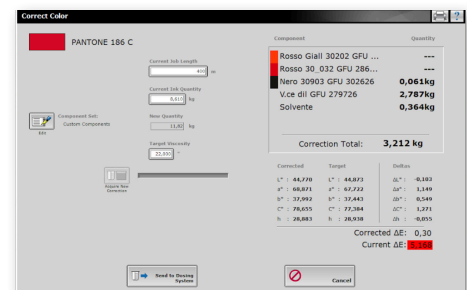


QualityTrack will also identify simple corrections not requiring a recipe change:

- Suggested concentration change (+/- % concentration)

Ink correction in production:

InkCorrection allows you to correct the ink directly on press, by suggesting the most appropriate correction, be it a change of anilox, concentration or recipe. This module allows you to obtain accurate colors quickly and accurately by halving the ΔE with each correction, and also saves the “consolidated recipe” for possible addition of ink or future reprint. **InkCorrection** sends the correction directly to **InkWeigh** or to an automatic dosing system for simple and accurate weighing within a single workflow. This solution allows you to correct the ink even if the starting recipe is not known based on the spectral data of the measured sample. InkCorrection calculates the ink currently in the machine and, if used together with the **PressConnection** encoder board, sends an alert message in case the ink on press is not enough to finish production.



Functionality



Quality control at the end of production:

It is possible to search for the production to be evaluated by filtering the data by: customer name, job code, outfeed or infeed roll code, or specific sheet.

Analytics Basic also allows you to view all the data measured during production and saved in the database in the form of a table with customizable columns, as trend graphs for a specified number of measurements, or on timelines and CIElab graphs to check the distribution of printed colors. Finally, the solution allows you to export the selected data in different formats including excel, csv and CXF.

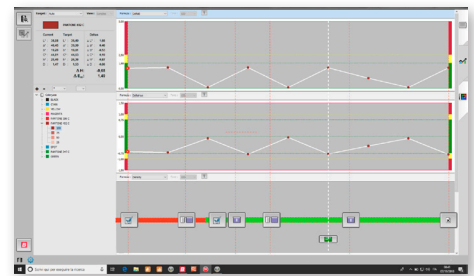
The optional **Analytics PRO** software, in addition to the Analytics Basic functions, allows the connection to multiple databases, even located in different plants and the simultaneous color search of jobs, and also enables the following functions:

- Compliance with color and TVI/ SCTV targets
- Evaluation of the color trends with associated events (start-up, correction, ink addition, notes, end of work)
- Productivity analysis (relationship between start-up and production)



Complete your workflow with

- **InkWeigh** is software designed for the complete management of inks. This solution supports the operator in the assisted weighing of color recipes, organizes the storage of inks with complete traceability of production batches, and manages leftovers thanks to the innovative solution that combines mathematical and colorimetric calculation.
- **CC Interface** is a new utility that allows the connection between ColorConsulting software (ColorTrack and InkWeigh) with the company ERP or MIS system.



Supported spectrophotometers:

- X-Rite eXact and Ci6x
- Baldwin Vision Systems DeltaCam

Minimum system requirements

- Monitor 24" 1920 x 1080
- Windows 10, 32-bit or 64-bit
- Core 2 Duo, 2GHZ
- .NET 4.5
- 4 GB RAM and 2 GB free hard-disk space (CAUTION: Additional disk space or database server space may be required, depending on usage)